
INTAKE AND EXHAUST

CONTENTS

GENERAL	2	INTAKE MANIFOLD	2
Outline of Change	2	EXHAUST MANIFOLD	3

GENERAL

OUTLINE OF CHANGE

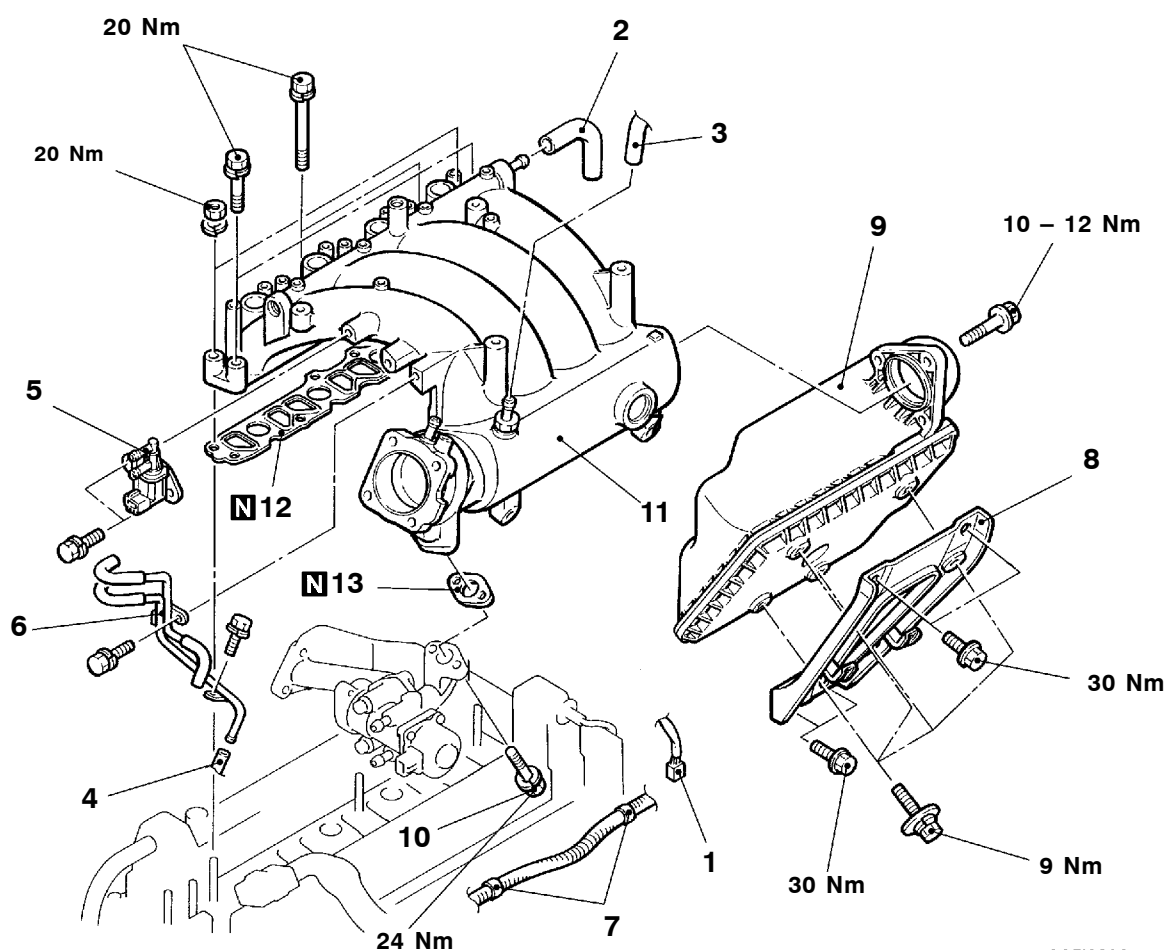
The following service procedure have been added for the lineup of the 4G64-GDI engines. Still, the other items are the same as the ones for the 4G63-MPI engines.

INTAKE MANIFOLD

REMOVAL AND INSTALLATION

Pre-removal and Post-installation Operation

- Engine Coolant Draining and Supplying (Refer to GROUP 14 – On-vehicle Service.)
- Engine Cover Removal and Installation
- Air Cleaner Assembly Removal and Installation
- Ignition Coil Removal and Installation
- Throttle Body Removal and Installation (Refer to GROUP 13I.)



A05I0092

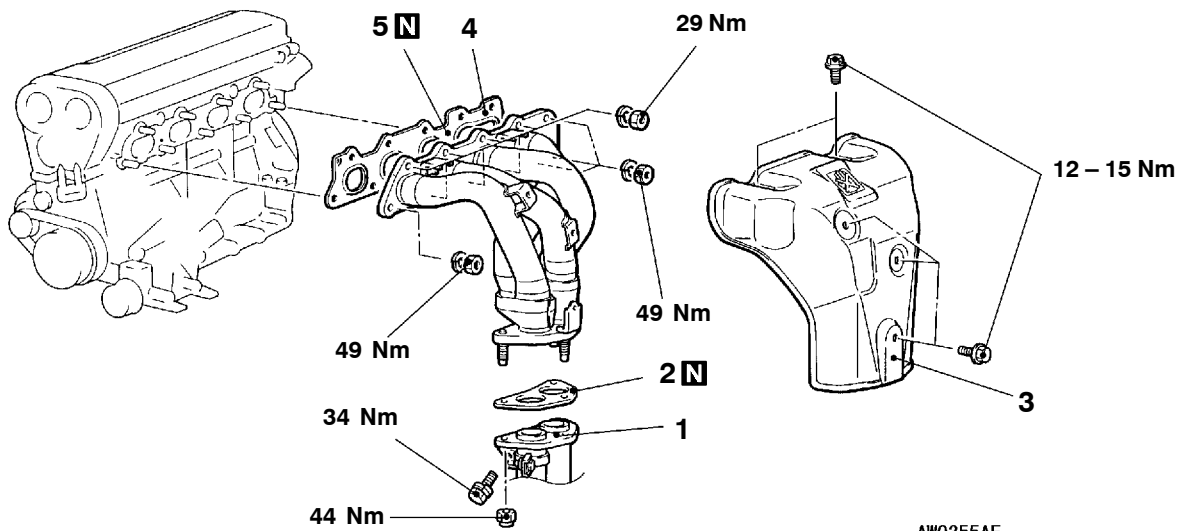
Removal steps

1. Engine harness connector and clamp
2. PCV hose
3. Brake booster vacuum hose connection
4. Vacuum hose connection
5. Purge solenoid valve
6. Vacuum pipe and hose assembly
7. Alternator harness clamp
8. Intake manifold stay
9. Air intake plenum resonator
10. Intake manifold and EGR valve support connecting bolt
11. Intake manifold
12. Intake manifold gasket
13. Gasket

EXHAUST MANIFOLD

REMOVAL AND INSTALLATION

Pre-removal and Post-installation Operation
Under Cover Removal and Installation



AW0355AE

Removal steps

1. Front exhaust pipe connection
2. Gasket
3. Heat protector

4. Exhaust manifold
5. Exhaust manifold gasket

NOTES